



THE BLACK PIG

REFERENCE: BH-0320BLAC

MAKE/MODEL: John White Semi-Trad

LOCATION: BHM 155

PRICE: SOLD



DIMENSIONS

Length: 55ft	Draught: 2ft	Air Draft (Max):
Beam: 6ft 10inch	Cabin Head Room:	

ENGINE DETAILS

No. of engines: 1	HP: 42hp	Last Service: Unknown
Engine: Inboard Diesel	Steering: Tiller	Max Speed (Approx): Unknown
Make: Vetus	Drive: Vetus Hydraulic Gearbox	Fuel Consumption (Approx): Unknown
Model: M4.17	Fuel Tank Capacity: 45 gallon Approx	Bow/Stern Thruster: Bow Thruster
No. of cylinders:	Engine Hrs: less than 300 hours	
Extra Info:		

GENERAL INFORMATION

Construction: Steel	Berth: 2 + 2	Mooring Available: Mooring available at Bridge House Marina however please be aware this mooring can NOT be used for residential purposes under any circumstances. Viewing STRICTLY by PRIOR appointment ONLY!
Hull Type:	BSC Expiry Date:	
Displacement	26/06/2021	
Finish: Blue Painted	Last	Canopy/Cover: Front Cratch, Rear tonneau cover
Topsides, Blacking on	Antifouled/Blacked:	Trailer: N/a
Hull	July 2016	Tender/Dinghy: N/a
Year of Build: 2004	Last Surveyed:	
	Unknown	
Extra Info:		

ACCOMMODATION

Galley: Yes	Single Berths: 0	Total Berths: 2 + 2
Dinette: Yes	Double Berths: 2	Heads/Bathrooms: Yes
Extra Info:		

NAVIGATION EQUIPMENT

GPS: N/a	Navigation Lights: Yes	Depth Sounder: N/a
VHF/CB Radio: N/a	Spot Light: Yes	Fish Finder: N/a
Auto Pilot: N/a	Compass: N/a	
Extra Info:		

ELECTRICS

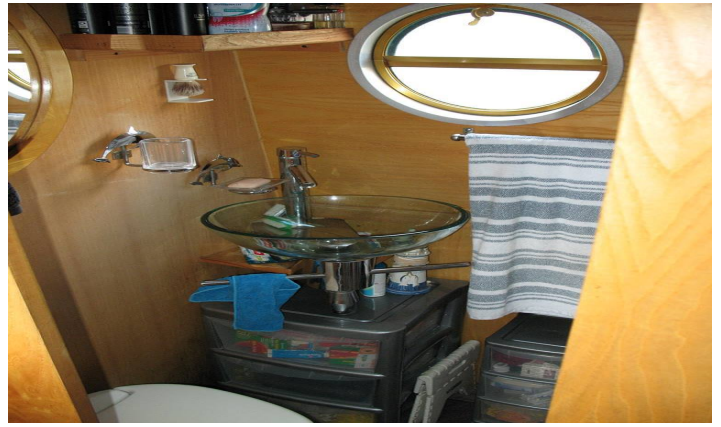
12v: Yes	Battery Size/Quantity:
Horn: Yes	Shore Power: Yes
Inverter:	Battery Charger: Sterling Battery Charger
Generator: N/a	Entertainment System: N/a
	Windscreen Wiper: N/a
Extra Info:	

DOMESTIC EQUIPMENT

Cooker: 4 Burner hob, grill & oven	Water Tank Capacity: 80 Gallon Stainless Steel	Bath: N/a
Microwave:	Water System: Pressure Pump	Toilet: Cassette Toilet
Refrigerator: Yes	Hot Water Supply: 12 gallon Calorifier	Interior Lighting: Yes
Freezer:	Shower: Yes	Heating: Solid fuel stove and diesel boiler to radiators
Sink: Yes		Gas Locker: Yes
Extra Info:		

GENERAL EQUIPMENT





GENERAL INFORMATION

Description: 'The Black Pig' is a well-appointed narrowboat that was originally bought as a sail-a-way and then fitted out by the previous owner to a good standard. Last blacked July 2016. No record of last engine service but has less than 300 hours running time on the clock. Mooring available at BHM however please be aware this mooring can NOT be used for residential purposes under any circumstances. Escorted viewings by PRIOR appointment ONLY!!! The Exterior of 'The Black Pig' is tidy, finished in blue gloss to the superstructure and bitumen based blacking to the hull. Last blacked July 2016. As you step down into the cabin from the bow you will find the lounge which comprises of solid fuel stove, corner TV cabinet and two easy chairs, then moving to the stern is the 4 seater pulman style dinette which converts to a double berth. Next is the U shaped galley which comprises of various high and low level cupboards, sink, cooker and fridge. Leading on from the galley is a companion way that first leads you to the Heads (bathroom) with the usual shower, wash basin and cassette toilet. Finally the companion way opens out into the bedroom with fixed double bed, wardrobe and various high and low level cupboards

TEL: 01995 603207 | WWW.BRIDGEHOUSEMARINA.CO.UK | EMAIL: INFO@BRIDGEHOUSEMARINA.CO.UK